

NEW



Application

BEC series AC contactor (hereinafter contactor) is a newest design which suitable for using in the circuits up to the rated voltage 690V AC 50Hz or 60Hz, rated current up to 95A, for making, breaking, frequently starting & controlling the AC motor. Combined with the thermal relay, it becomes the electromagnetic starter for protecting the overload circuits. This series contactor complies with GB14048.4, IEC60947-4-1.

Model and Implication

BE C - □ □ □ □

Contacts type and quantity

10: 3NO main contacts+1NO auxiliary contact (less than 32A)

01: 3NO main contacts+1NC auxiliary contact (less than 32A)

11: 3NO main contact+1NO auxiliary contact+1NC auxiliary contact (more than 40A)

04: 3NO main contacts, 08: 2NO+2NC main contacts (Except for 18A and 32A)

Specification Code (the rated current for 380V/400V AC-3 usage category)

AC contactor

Economical

Working and Installation Condition

- Ambient air temperature: -5℃ --+40℃ and average not more than +35℃ within 24hours;
- Altitude: no more than 2000m;
- Air condition: when the highest temperature is +40℃, the air relative humidity is not up to 50%, but the higher humidity is allowed at lower temperature. Like, 90% humidity at 20℃. The condensate dew should be considered when at lower temperature;
- Pollution degree: class 3;
- Installation category: III;
- Protection degree: IP20;
- Installation condition: the gradient angle between installation side and vertical side should not be more than ± 5°;
- Impact and vibration: the contactor must be installed and operate under the circumstances of no obvious shaking, impact and vibration.

Structure characteristic

- The wonderful appearance design looks textural, which stops shocking, use more safely and reliably;
- It can be installed with auxiliary contacts block, time relay and current-limited contacts block, and thermal relay, then to be other derivative products;
- This series contactor has small volume, light weight, less power loss, long life and safe and reliability etc;
- The contactor can be equipped with 1NO auxiliary contact or 1NC auxiliary contact (less than 32A), and 1NO auxiliary contact+1NC auxiliary contact (more than 40A). In addition, it can be equipped with F4 auxiliary contact block (2 blocks or 4 blocks);
- In addition to use screw to install, contactor can be tightened with the standard installing rail of 35mm (BEC-09~95) and the standard installing rail of 75mm (BEC-40~95).



BEC-09~18



BEC-25~32

Main Parameters and Technical Performance

Type			BEC-09	BEC-12	BEC-18	BEC-25	BEC-32
Rated heating current (A)			20	20	25	32	40
Rated insulation voltage (V)			690				
Rated impact withstand voltage (KV)			6				
Rated making capacity			10Ie				
Rated breaking capacity			8Ie				
Poles			3				
Auxiliary contact			NO/NC				
Short-time withstand current (A)	10s		72	96	144	200	256
AC-3 Rated working current (A)	220/230V		9	12	18	25	32
	380/400V		9	12	18	25	32
	660/690V		6.6	8.9	12	18	22
AC-3 capacity of phase 3 squirrel-cage motor (AC-3) KW	220/230V		2.2	3	4	5.5	7.5
	380/400V		4	5.5	7.5	11	15
	660/690V		5.5	7.5	10	15	18.5
Operation frequency (times/h)	Electrical life		1200			600	
	Mechanical life		3600				
AC-3 Electrical life (10 ⁴ /times)			100	100	100	100	80
Mechanical life (10 ⁴ /times)			1000	1000	1000	800	800
Equipped fuse type			RT16-20	RT16-20	RT16-32	RT16-40	RT16-50
Rated control supply voltage Us (V)	50/60Hz		12~480				
Operation range	Pull-in		(85%~110%)Us				+40℃
	Releasing		(20%~75%)Us				-5℃
AC coil average power (VA)	Start		70			110	
	Keeping		9.0		9.5	14.0	
Power efficiency class			class 3				
Thermal loss (W)			2~3			3~4	
Actuation time (ms)	Close		12~25				
	Break		5~20				
Main circuit wiring	flexible wire without cold pressing terminal (mm ²)	1 stick	1~4	1~4	1~4	1.5~10	1.5~10
		2 sticks	1~4	1~4	1~4	1.5~6	1.5~6
	flexible wire with cold pressing terminal (mm ²)	1 stick	1~4	1~4	1~4	1~6	1~6
		2 sticks	1~2.5	1~2.5	1~2.5	1~4	1~4
	Hard wire (mm ²)	1 stick	1~4	1~4	1~4	2.5~10	2.5~10
		2 sticks	1~4	1~4	1~4	2.5~10	2.5~10
Fastening screw size			M3.5			M4	
Tightening fastening torque (N.m)			0.8			1.2	
Control loop wiring	flexible wire without cold pressing terminal (mm ²)	1 stick	1~4	1~4	1~4	1~4	1~4
		2 sticks	1~4	1~4	1~4	1~4	1~4
	flexible wire with cold pressing terminal (mm ²)	1 stick	1~4	1~4	1~4	1~4	1~4
		2 sticks	1~2.5	1~2.5	1~2.5	1~2.5	1~2.5
	Hard wire (mm ²)	1 stick	1~4	1~4	1~4	1~4	1~4
		2 sticks	1~4	1~4	1~4	1~4	1~4
Fastening screw size			M3.5				
Tightening fastening torque (N.m)			0.8				



BEC-40~65

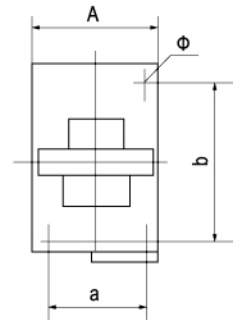
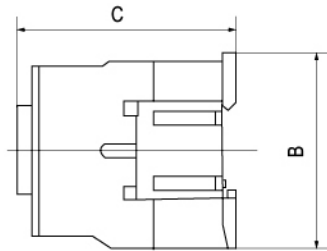


BEC-80~95

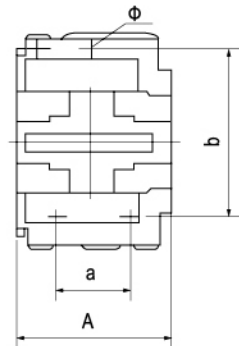
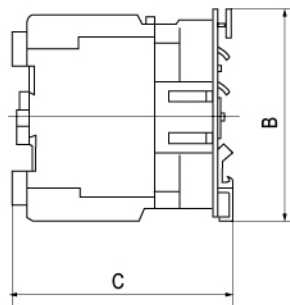
BEC-40	EC-50	BEC-65	BEC-80	BEC-95
50	60	80	110	110
		690		
		6		
		10Ie		
		8Ie		
		3		
		1NO+1NC		
320	400	520	640	760
40	50	65	80	95
40	50	65	80	95
34	39	42	49	49
11	15	18.5	22	25
18.5	22	30	37	45
30	33	37	45	45
		600		
		3600		
80	60	60	60	60
800	800	800	600	600
RT16-63	RT16-80	RT16-80	RT16-100	RT16-125
		24~380		
		(85%~110%)Us +40℃		
		(20%~75%)Us -5℃		
		200		
		57.0		
		class 3		
		6~10		
	20~25		20~35	
	8~15		8~20	
2.5~25	2.5~25	2.5~25	4~50	4~50
2.5~16	2.5~16	2.5~16	4~25	4~25
2.5~25	2.5~25	2.5~25	4~50	4~50
2.5~10	2.5~10	2.5~10	4~16	4~16
2.5~25	2.5~25	2.5~25	4~50	4~50
2.5~16	2.5~16	2.5~16	4~25	4~25
	M8		M10	
	3.5		4.0	
1~4	1~4	1~4	1~4	1~4
1~4	1~4	1~4	1~4	1~4
1~4	1~4	1~4	1~4	1~4
1~2.5	1~2.5	1~2.5	1~2.5	1~2.5
1~4	1~4	1~4	1~4	1~4
1~4	1~4	1~4	1~4	1~4
		M3.5		
		0.8		

Appearance and Installation Dimension

BEC-09~32 Appearance and installation dimension



BEC-40~95 Appearance and installation dimension



Type	A max	B max	C max	a	b	Φ
BEC-09~12	47	76	82	34/35	50/60	4.5
BEC-18	47	76	87	34/35	50/60	4.5
BEC-25	57	86	95	40	48	4.5
BEC-32	57	86	100	40	48	4.5
BEC-40~65	77	129	116	40	100/110	6.5
BEC-80~95	87	129	127	40	100/110	6.5