

NEW



4th couple main contact,
1 couple contacts more
than normal design



4th couple main contact,
1 couple contacts more
than normal design

Application

BHC series AC contactor (hereinafter contactor) is a novel design which suitable for using in the circuits up to the rated voltage 690V AC 50Hz or 60Hz, rated current up to 95A, for making, breaking, frequently starting & controlling the AC motor. Combined with the thermal relay, it becomes the electromagnetic starter for protecting the overload circuits. This series contactor complies with GB14048.4, IEC60947-4-1.

Model and Implication

BH C - □ □ □

Contacts type and quantity

10: 4NO main contacts+1NO auxiliary contact (less than 32A)

01: 4NO main contacts+1NC auxiliary contact (less than 32A)

11: 4NO main contact+1NO auxiliary contact+1NC auxiliary contact (more than 40A)

Specification Code (the rated current for 380V/400V AC-3 usage category)

AC contactor

Premium Quality

Working and Installation Condition

- Ambient air temperature: -5℃ --+40℃ and average not more than +35℃ within 24hours;
- Altitude: no more than 2000m;
- Air condition: when the highest temperature is +40℃, the air relative humidity is not up to 50%, but the higher humidity is allowed at lower temperature. Like, 90% humidity at 20℃. The condensate dew should be considered when at lower temperature;
- Pollution degree: class 3;
- Installation category: III;
- Protection degree: IP20;
- Installation condition: the gradient angle between installation side and vertical side should not be more than ± 5°;
- Impact and vibration: the contactor must be installed and operate under the circumstances of no obvious shaking, impact and vibration.

Structure characteristic

- The wonderful appearance design looks textural, which stops shocking, use more safely and reliably;
- It can be installed with auxiliary contacts block, time relay and current-limited contacts block, and thermal relay, then to be other derivative products;
- This series contactor has small volume, light weight, less power loss, long life and safe and reliability etc;
- The contactor can be equipped with 1NO auxiliary contact or 1NC auxiliary contact (less than 32A), and 1NO auxiliary contact+1NC auxiliary contact (more than 40A). In addition, it can be equipped with F4 auxiliary contact block (2blocks or 4blocks);
- In addition to use screw to install, contactor can be tightened with the standard installing rail of 35mm (BHC-09~95) and the standard installing rail of 75mm (BHC-40~95).



BHC-09~18



BHC-25~32

Main Parameters and Technical Performance

Type		BHC-09	BHC-12	BHC-18	BHC-25	BHC-32	
Rated heating current (A)		20	20	25	32	40	
Rated insulation voltage (V)		690					
Rated impact withstand voltage (KV)		6					
Rated making capacity		10Ie					
Rated breaking capacity		8Ie					
Poles		3					
Auxiliary contact		NO/NC					
Short-time withstand current (A)	10s	72	96	144	200	256	
AC-3 Rated working current (A)	220/230V	9	12	18	25	32	
	380/400V	9	12	18	25	32	
	660/690V	6.6	8.9	12	18	22	
AC-3 capacity of phase 3 squirrel-cage motor (AC-3) KW	220/230V	2.2	3	4	5.5	7.5	
	380/400V	4	5.5	7.5	11	15	
	660/690V	5.5	7.5	10	15	18.5	
Operation frequency (times/h)	Electrical life	1200			600		
	Mechanical life	3600					
AC-3 Electrical life (10 ⁴ /times)		100	100	100	100	80	
Mechanical life (10 ⁵ /times)		1000	1000	1000	800	800	
Equipped fuse type		RT16-20	RT16-20	RT16-32	RT16-40	RT16-50	
Rated control supply voltage Us (V)	50/60Hz	12~480					
Operation range	Pull-in	(85%~110%)Us +40℃					
	Releasing	(20%~75%)Us -5℃					
AC coil average power (VA)	Start	70			110		
	Keeping	9.0			14.0		
Power efficiency class		class 3					
Thermal loss (W)		2~3			3~4		
Actuation time (ms)	Close	12~25					
	Break	5~20					
Main circuit wiring	flexible wire without cold pressing terminal (mm ²)	1 stick	1~4	1~4	1~4	1.5~10	1.5~10
		2 sticks	1~4	1~4	1~4	1.5~6	1.5~6
	flexible wire with cold pressing terminal (mm ²)	1 stick	1~4	1~4	1~4	1~6	1~6
		2 sticks	1~2.5	1~2.5	1~2.5	1~4	1~4
	Hard wire (mm ²)	1 stick	1~4	1~4	1~4	2.5~10	2.5~10
		2 sticks	1~4	1~4	1~4	2.5~10	2.5~10
Fastening screw size		M3.5			M4		
Tightening fastening torque (N.m)		0.8					
Control loop wiring	flexible wire without cold pressing terminal (mm ²)	1 stick	1~4	1~4	1~4	1~4	1~4
		2 sticks	1~4	1~4	1~4	1~4	1~4
	flexible wire with cold pressing terminal (mm ²)	1 stick	1~4	1~4	1~4	1~4	1~4
		2 sticks	1~2.5	1~2.5	1~2.5	1~2.5	1~2.5
	Hard wire (mm ²)	1 stick	1~4	1~4	1~4	1~4	1~4
		2 sticks	1~4	1~4	1~4	1~4	1~4
Fastening screw size		M3.5					
Tightening fastening torque (N.m)		0.8					



BHC-40~65



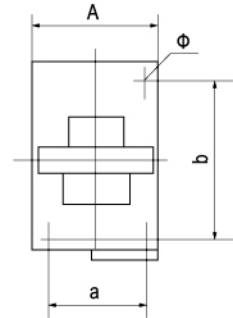
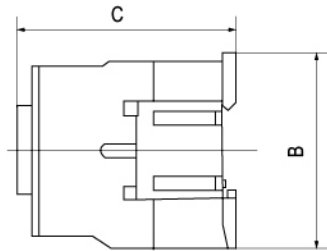
BHC-80~95

	BHC-40	BHC-50	BHC-65	BHC-80	BHC-95
	50	60	80	110	110
			690		
			6		
			10Ie		
			8Ie		
			3		
			1NO+1NC		
	320	400	520	640	760
	40	50	65	80	95
	40	50	65	80	95
	34	39	42	49	49
	11	15	18.5	22	25
	18.5	22	30	37	45
	30	33	37	45	45
			600		
			3600		
	80	60	60	60	60
	800	800	800	600	600
	RT16-63	RT16-80	RT16-80	RT16-100	RT16-125
			24~380		
			(85%~110%)Us	+40°C	
			(20%~75%)Us	-5°C	
			200		
			57.0		
			class 3		
			6~10		
		20~25		20~35	
		8~15		8~20	
	2.5~25	2.5~25	2.5~25	4~50	4~50
	2.5~16	2.5~16	2.5~16	4~25	4~25
	2.5~25	2.5~25	2.5~25	4~50	4~50
	2.5~10	2.5~10	2.5~10	4~16	4~16
	2.5~25	2.5~25	2.5~25	4~50	4~50
	2.5~16	2.5~16	2.5~16	4~25	4~25
		M8		M10	
		3.5		4.0	
	1~4	1~4	1~4	1~4	1~4
	1~4	1~4	1~4	1~4	1~4
	1~4	1~4	1~4	1~4	1~4
	1~2.5	1~2.5	1~2.5	1~2.5	1~2.5
	1~4	1~4	1~4	1~4	1~4
	1~4	1~4	1~4	1~4	1~4
			M3.5		
			0.8		

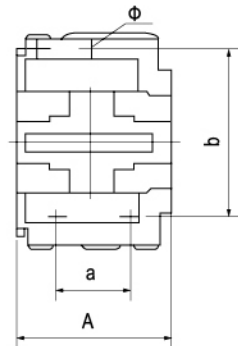
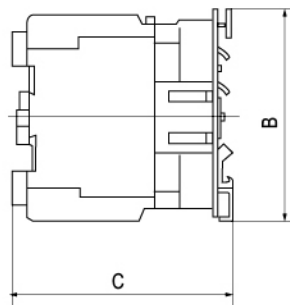
AC Contactor

Appearance and Installation Dimension

BHC-09~32 Appearance and installation dimension



BHC-40~95 Appearance and installation dimension



Type	A max	B max	C max	a	b	Φ
BHC-09~12	47	76	82	34/35	50/60	4.5
BHC-18	47	76	87	34/35	50/60	4.5
BHC-25	57	86	95	40	48	4.5
BHC-32	57	86	100	40	48	4.5
BHC-40~65	77	129	116	40	100/110	6.5
BHC-80~95	87	129	127	40	100/110	6.5